

With your support,
we can do even more...

Since 1898



Let us fight against diseases together : make a donation for research !
Ndeha resentsika ny aretina : tohano ny fikarohana !

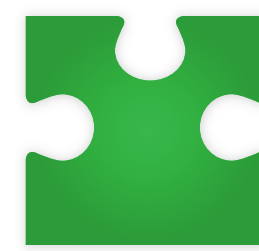
« To our partners,
Our achievements are also yours... »

Institut Pasteur de Madagascar
P.O Box 1274, Ambatofotsikely Avaradoha
101 Antananarivo, Madagascar
Phone : (+261 20) 22 590 00
Email : communication@pasteur.mg
Website : www.pasteur.mg
in @pasteurMG



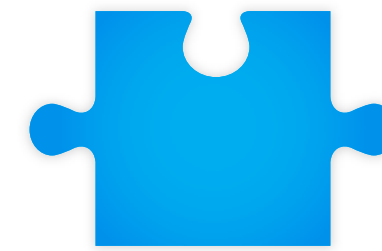
DONOR PROGRAM

The donors program of the Institut Pasteur de Madagascar (IPM) gathers those who wish to accompany the IPM in perpetuating its various missions through a regular donation. Depending on the size of their donations, donors may benefit from specific advantages (eg : visibility on the IPM website and annual report for all donors).



DONATIONS IN KIND

The IPM is entitled to receive in-kind donations, non-financial contributions (physical goods or services) from donors (private companies, non-governmental or governmental organizations, associations, legal entities or individuals) convinced by the importance of its missions. In-kind donations are one-off contributions within the framework of IPM research, training and public health missions.



CASH DONATIONS

Cash donations are financial contributions that are given without restriction of use for the fulfillment of IPM missions. Donors may be private companies, non-governmental or governmental organizations, associations, legal entities or individuals who wish to support or sustain the IPM in its missions. Cash donations are one-off contributions within the framework of IPM research, training and public health mission.



TARGETED DONATIONS

Any support (financial, material, services) made to an event or project carried out by the IPM.

Maternal and child health
Training
Research
Public health
Madagascar
Vaccines

Filariasis Arbovirus Diabetes Infections Analysis Expertise Anopheles
 Fever Investigation Bilharziosis Diseases surveillance One Health
 GIS Leptospirosis Influenza High blood pressure
 West Nile Fever Ebola Tuberculosis Zika
 Malnutrition Fleas Malaria Rabies Water
 Rift Valley Fever Hantavirus Plasmodium Diagnostic test development
 Plague antibiotic resistance
 Epidemics Hepatitis cysticercosis anthropology Virus Immunology
 bacteria antibiotics food safety Investigation Hygiene



+570 employees

97% : malagasy
3% : other (French, Beninese, Belgians, Italians...)



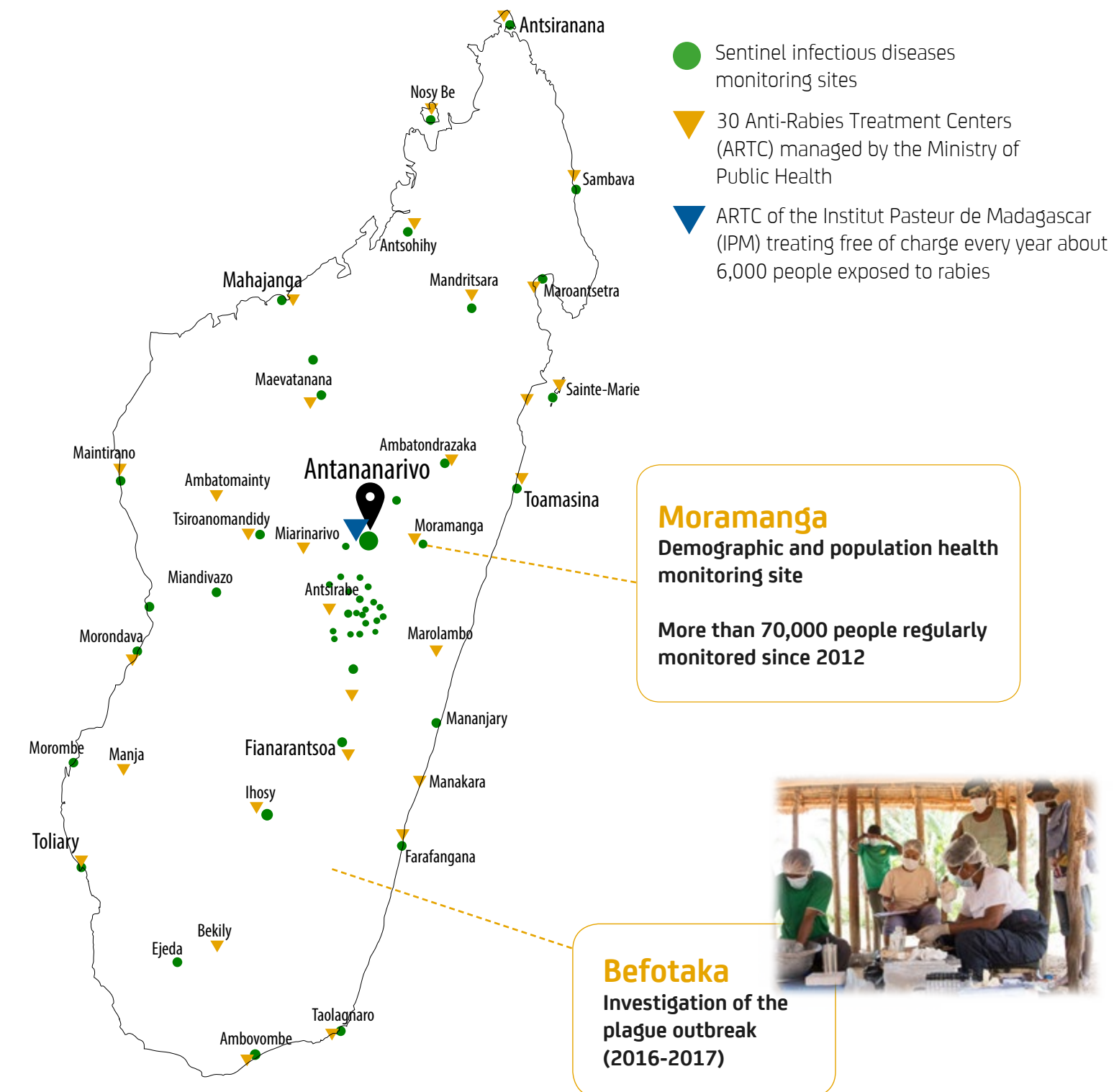
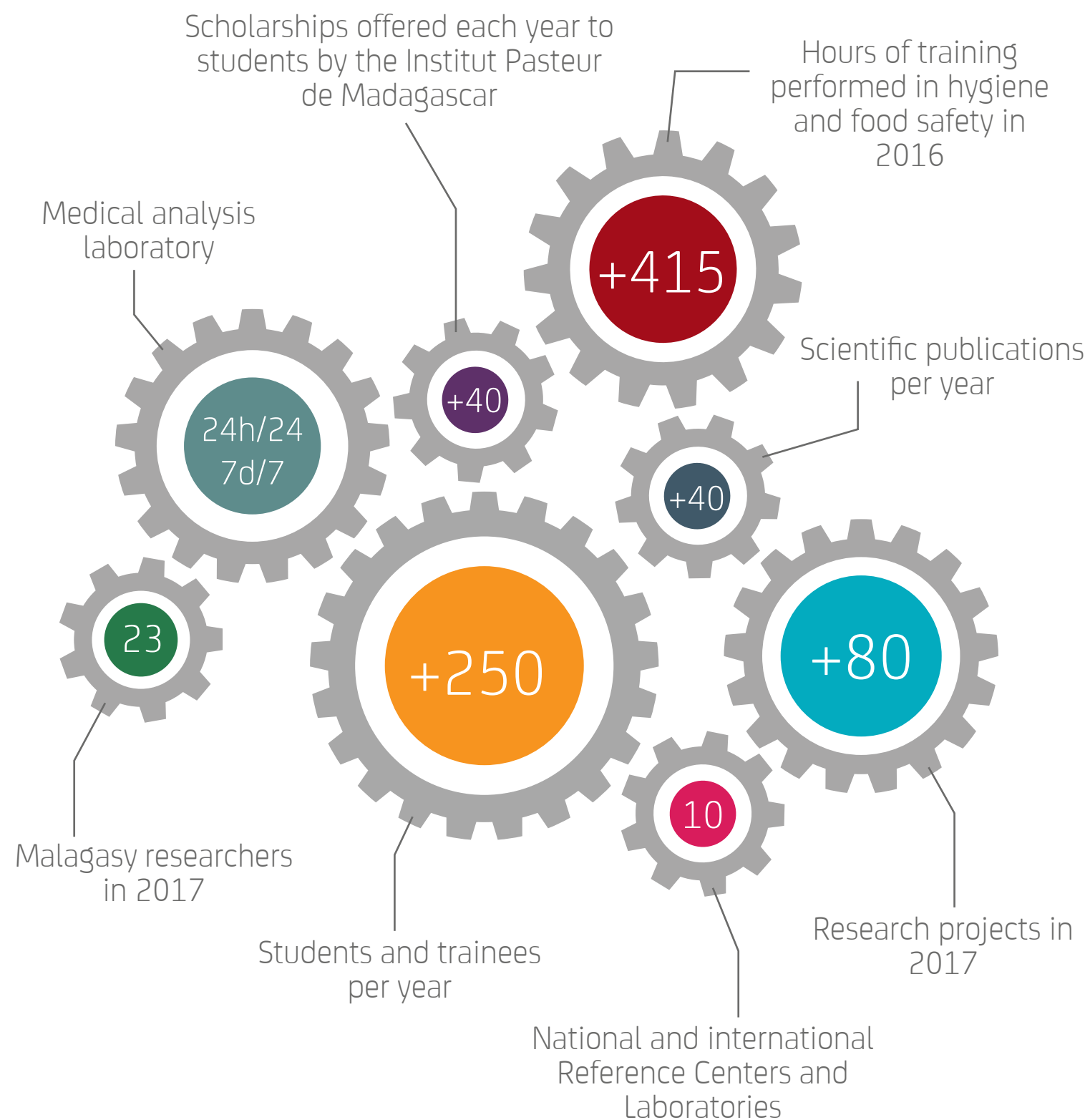
Advanced equipment

Mass spectrometer
Biosafety level 3 laboratory (BSL 3)



+100 partners

Domestic and international : research institutes and centers, universities, hospitals, ministries, donors



Rapid Diagnostic Test for plague

Developed by researchers from the Institut Pasteur de Madagascar (IPM) in collaboration with Institut Pasteur in Paris and distributed free of charge to the public health infrastructures of Madagascar



25 Science PhD students

are trained at the Institut Pasteur de Madagascar in 2017



+35,000 doses of rabies vaccines

distributed free of charge annually by the Institut Pasteur de Madagascar to the 30 ARTC administered by the Ministry of Public Health

Institut Pasteur de Madagascar

With your support, we can do even more...

The Institut Pasteur de Madagascar (IPM) is a non-profit Malagasy private scientific institution and is recognized of public utility. It is under the patronage of the Government of the Malagasy Republic and governed by the 1961 agreement that binds the Institut Pasteur in Paris and the Government of the Malagasy Republic. IPM is a member of the Institut Pasteur International Network (the IPIN), which is comprised of **33 institutes present on the five continents**. The mission of IPM is to contribute to the prevention and treatment of diseases and to economic development through research, training and public health activities.

Why support IPM ?

IPM's financial fragility :

- Grants received by IPM are allocated to contracts related to research projects.
- The business model of IPM depends largely on the services provided by its laboratories. Grants received are fully allocated to research or health programs. As a result, with few exceptions, IPM is not able to make structural investments (infrastructure, equipment, upgrading work, etc) which can only be carried out on its own funds.

As a donor of IPM, you will be contributing to the fight against diseases and to improving the health of the Malagasy population. Institut Pasteur de Madagascar brings together high-quality teams working on the study of many diseases that are one of public health issues : malaria, plague, cysticercosis, diarrheal diseases, arbovirus (Zika, chikungunya), tuberculosis, influenza...

We need you...

Institut Pasteur de Madagascar is completely transparent with its partners in the use of received funding and grants :

1. IPM is used to make elaborated reports with demanding donors (WHO, IPP, USAID...)
2. IPM will make scientific and financial reports on the actions carried out with received donations
3. The financial statements of the projects will be presented to the partners

The funds received from individual and business donations will allow to continue, consolidate and diversify their research. Each donation helps to further biomedical research one step forward. We need you...

How to support IPM ?

You can support IPM as follows :

• By joining the “donors program”

For your commitment to an annual contribution, you can choose your membership category and benefit from different advantages offered by IPM.

• Donations in kind

You can give a one-off in-kind donation according to IPM needs in terms of equipment or other supplies and consumables. The specific benefits associated with your donation will be discussed individually with the Board of Directors.

• Cash donations

You can make a one-off cash donation without restriction of use according to your abilities. The specific benefits associated with your donation will be discussed individually with the Board of Directors.

• Targeted donations

You can make one-off targeted donations according to the needs of IPM students (scholarships, equipment, infrastructure). The specific benefits associated with your donation will be discussed individually with the Board of Directors.

You could fill out and send us the expression of interest form. (See Annex II)



**Institut Pasteur
de Madagascar**

Annex I : Membership in the “Donors program”



Citrine

Turquoise

Amethyst

Ruby

Sapphire

Emerald

Diamond

Amount of the annual contributions by category in Ariary

Benefits by category

Less than
350 000 Ar**From
350 000 ArFrom
1 500 000 ArFrom
2 500 000 ArFrom
3 500 000 ArFrom
5 500 000 ArFrom
7 000 000 Ar

| | | | | | | | | |
|----|--|---|---|---|---|---|---|---|
| 1 | Access to a visit of IPM | X | X | X | X | X | X | X |
| 2 | Receipt of information about IPM's activities | X | X | X | X | X | X | X |
| 3 | Visibility on IPM website (name, logo and link to the donor's website) | X | X | X | X | X | X | X |
| 4 | Name of the donor cited in IPM's annual report | X | X | X | X | X | X | X |
| 5 | Access to IPM's conferences | | X | X | X | X | X | X |
| 6 | An invitation to events organized by IPM | | | X | X | X | X | X |
| 7 | Access to the annual conference of major donors | | | | X | X | X | X |
| 8 | Visibility on a bulletin board dedicated to donors at IPM (name, logo, institutional/promotional posters)* | | | | | X | X | X |
| 9 | Visibility on screens in IPM's waiting rooms (short institutional/promotional video)* | | | | | X | X | X |
| 10 | Ability to distribute communication materials to IPM staff (distribution of brochures or flyers)* | | | | | | X | X |
| 11 | Possibility to have a booth during IPM institutional events open to the public* | | | | | | X | X |
| 12 | Possibility to carry out a periodic promotional activities for IPM staff* | | | | | | | X |
| 13 | Possibility to have access to IPM's conference room when organizing events* | | | | | | | X |
| 14 | Possibility to have access to IPM's park when organizing group events* | | | | | | | X |

* Subject to compatibility with the Pasteurian charter of values and ethics

** 50 000 Ar - 150 000 Ar : Advantages 1 and 2

** 150 000 Ar - 250 000 Ar : Advantages 1, 2 and 3

** 250 000 Ar - 350 000 Ar : Advantages 1, 2, 3 and 4

Annex II : Expression of interest form

NAME OF THE ORGANIZATION/OF THE DONOR :

NAME OF THE REPRESENTATIVE OF THE ORGANIZATION :

FUNCTION :

ADDRESS :

PHONE NUMBER :

MOBILE PHONE :

E-MAIL :

WEBSITE :

We would like to support IPM by :

- **Joining the “donors program” by paying an annual contribution**
Specify the amount of the annual contribution in Ariary/Euros :
- **Granting of one-off in-kind donations**
Specify the type of your donation :
- **Granting of one-off cash donations**
Specify the amount in Ariary/Euros :
- **Granting of targeted donations (scholarships, equipment, infrastructure)**
Specify the amount in Ariary/Euros or the type of your donation :

DATE :

SIGNATURE AND STAMP :

Please send us this form once filled out so we could contact you :

- By email at communication@pasteur.mg
- In person at IPM Avaradoha in a sealed envelope addressed to the Director of IPM
- By mail : BP 1274, Ambatofotsikely Avaradoha, 101 Antananarivo - Madagascar

We thank you for your interest in IPM activities and your support

Institut Pasteur de Madagascar

P.O Box 1274, Ambatofotsikely Avaradoha

101 Antananarivo, Madagascar

Phone : (+261 20) 22 590 00

Email : communication@pasteur.mg

Website : www.pasteur.mg

  @pasteurMG

